

# IN1100 (SERIES)

## InFocus

Bright Ideas Made Brilliant



## Lighten Up

The perfect mobile projector for your Mac, iPad or PC.

# IN1100 (SERIES)

## So small, light and bright, it's the perfect mobile projector

The InFocus IN1110 and IN1112 are the smallest and lightest projectors we have. In fact, weighing in at only 2.7 lbs (1.2 kg) and shining up to 2200 lumens, they're our brightest projectors pound-for-pound.

The combination of high brightness, light weight and compact size is ideal for the travelling professional that faces unpredictable environments every day. Whether you're in a brightly lit room or cramped for time and space, the IN1100 Series is the mobile projector you can count on to perform every time.

### Why Choose the IN1100 Series?

- Compact and light weight (only 2.7 lbs / 1.2 kg) for easy travel
- Up to 2200 lumens of brightness to combat any lighting situation
- HDMI input to connect with iPads, iPhones, Android and PCs too
- Durable, road-tested design that's built to last
- Widescreen model to match today's laptop screens
- 3D capable so it's ready for whatever content is to come
- 5-year limited warranty adds peace of mind



#### MODELS

##### IN1110

XGA 1024 x 768  
2100 lumens  
2.7 lbs (1.2 kg)

##### IN1112

WXGA 1280 x 800  
2200 lumens  
2.7 lbs (1.2 kg)

### Compatibility Beyond the Laptop

Use the InFocus IN1100 Series to project your iPad, iPhone, Android phone or tablet – and, oh yeah, your PC or Mac too.



The iPad 2 fully supports HDMI

## Connect Fast

In a hurry? Connect via HDMI to present full HD quality video (and audio too) in just seconds. VGA, S-Video and Composite Video ports are also included for when the need arises. You can even connect it to an external audio system with the audio out port – another new addition to this product family.



## Compact and Light

At only 2.7 lbs (1.2 kg), the IN1110/IN1112 is the smallest and lightest InFocus projector. That means it's easy to pack, easy to carry and won't weigh you down.

## Brightness Adds Confidence

Room lighting can be a wildcard for the business traveler. You never know what you'll get. Pound-for-pound these powerful little projectors pump out the most lumens of most any projector out there. So you know your presentation will be brightly displayed regardless of the room's ambient light.

## Built for the Road

The projector has a recessed lens and tethered lens cap to keep it safe from impact. Plus, its smooth exterior leaves nothing to snag or break off when taking it in and out of its case.

Plus, the IN1100 Series' durability is backed by our exclusive 5-year limited warranty, so you know it's tough and ready to perform on the road.



Padded carrying case is included

## Widescreen

WXGA resolution and an HDMI connection are must-haves for displaying HD content. The InFocus IN1112 model has native WXGA resolution, so your audience will see your widescreen laptop as you intend, without scaling.



### Connectivity

VGA (D-Sub HD15)  
S-Video  
3.5 mm audio out  
USB Mini-B for wired remote  
& firmware updates

HDMI 1.3  
Composite video  
3.5 mm audio in

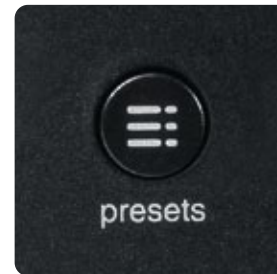
## No Projector Screen? No Problem.

Because a projector screen won't always be available, the Presets button on top of the projector lets you choose a mode to get the best image quality on a beige wall, whiteboard, blackboard, or other surface.

Plus, you can point the projector at the wall from nearly any angle and its keystone correction will instantly fix the image to be square-cornered and true.

## 3D Capable

Display 3D content – such as visualizations and virtual walkthroughs in medicine, architecture and engineering – created in the top emerging 3D standards.



# Specifications\*

IN1110

IN1112

Native Resolution	XGA 1024 × 768	WXGA 1280 × 800
Maximum Input Resolution	WUXGA <sup>^</sup> 1920 × 1200	
Display Technology	DLP®	
Brightness	2100 ANSI lm (1550 lm Eco Mode)	2200 ANSI lm (1650 lm Eco Mode)
Lamp Life**	4000 Hrs Eco Mode (3000 Hrs Normal)	
Contrast Ratio	2600:1	
Audio	1 W	
Input Connections	VGA (HD15) × 1, HDMI with audio × 1, S-Video × 1, Composite Video × 1, Audio in 3.5 mm × 1	
Output Connections	Audio out 3.5 mm × 1	
Control	USB mini-B	
Aspect Ratio	Native 4:3 (Supports 5:4, 16:9, 16:10)	Native 16:10 (Supports 4:3, 5:4, 16:9)
Lamp Power	165 W	
Power Consumption	Bright: 185 W, Eco: 164 W, Standby: <1 W	
Power Supply	90 - 264 Vac, 50/60 Hz	
Video Compatibility	NTSC/NTSC4.43/PAL/PAL-M/PAL-N/SECAM, 480i/p, 576i/p, 720p, 1080i/p	
Synch - Horizontal Scan Freq	31.4 - 91.1 KHz	
- Vertical Scan Freq	23.5 - 85 Hz, 120 Hz (3D)	
Throw Ratio (distance/image width)	1.95 - 2.15	1.55 - 1.7
Zoom Ratio	1.1:1	
Projection Distance	3.9 - 39 ft / 1.2 - 12 m	
Image Size (width)	22 - 242 in / 56 - 615 cm	28 - 304 in / 71 - 772 cm
Image Offset	115%	112%
Projection Methods	Front, Rear	
Keystone Correction	Automatic, vertical ± 30%	
Audible Noise	29 dBA Eco Mode (33 dBA High Power)	
Operating Temperature	41° - 95° F / 5° - 35° C	
Maximum Altitude	10,000 ft / 3,048 m	
Product Color	Black	
Product Weight	2.7 lbs / 1.2 kg	
Product Dimensions - W×D×H	8.4 × 7.1 × 2.5 in / 213 × 181 × 65 mm	
Shipping Weight	7.5 lbs / 3.4 kg	
Shipping Dimensions - W×D×H	7.28 × 15.55 × 11.42 in / 185 × 395 × 290 mm	
Ships with - Accessories	Power Cord, VGA Cable, Remote, USB Cable, Lens Cap with tether, Carry Case	
Menu Languages	English, French, Dutch, Italian, Korean, Norwegian, Portuguese, Russian, Spanish, Simplified Chinese, Traditional Chinese, Swedish, Polish, Turkish, Danish, Finnish	
Lamp Rupture Containment	Tested to contain particles larger than 0.8 mm***	
Accessory Warranty	90 days	
Approvals	FCC (USA), cULus (USA and Canada), WEEE (European Union), C-Tick mark (Australia), S-Mark (Argentina), NOM (Mexico), CE (Europe), Gost (Russian), CECP/CCC (China), CE/TUV-GS (Germany), SONCAP (Nigeria), SASO (Saudi Arabia), PSB (Singapore), SABS (South Africa)	
Security	Kensington Lock, User PIN	

## Optional Accessories

Replacement Lamp (SP-LAMP-043)  
 Presenter RF Remote with USB Receiver (HW-PRESENTER-RF-R)  
 Projector Screens (SC-PU-60, SC-PU-80, SC-PUW-73)  
 ATA Shipping Case (CA-ATA-MOB)  
 Security Lock (SEC-LOCK-01)  
 Extended warranties

For more information, please visit:  
[www.infocus.com/accessories](http://www.infocus.com/accessories)

## Warranty

The IN1110 and IN1112 projectors come standard with a 5-year limited factory warranty (including parts<sup>1</sup> and labor<sup>2</sup>) and a 6-month limited lamp replacement warranty. Extended product and lamp warranty programs are also available.

For more information, please visit:  
[www.infocus.com/support/warranty.aspx](http://www.infocus.com/support/warranty.aspx)



# InFocus

Bright Ideas Made Brilliant

[www.infocus.com](http://www.infocus.com)

**INFOCUS CORPORATE HEADQUARTERS**  
 13190 SW 68th Parkway  
 Portland, Oregon 97223-8368, USA  
 Phone: (1) 503-207-4700  
 Toll Free: (1) 877-388-8385  
 Fax: (1) 503-207-1937

**INTERNATIONAL HEADQUARTERS**  
 4 Teck Lim Road  
 Singapore 088382  
 Phone: (65) 6513-9600  
 Fax: (65) 6238-0535

\* Product specifications, terms, and offerings are subject to change at any time without notice. \*\* Actual lamp life may vary based on the ambient environment and projector usage. Conditions that may affect lamp life include temperature, altitude, and rapidly switching the projector on and off. \*\*\* Tested to contain particles larger than the specified size in any dimension. ^ Reduced blanking.  
 ©2011 InFocus Corporation. All rights reserved. Specifications are subject to change without further notice. InFocus and InFocus Bright Ideas Made Brilliant are either trademarks or registered trademarks of InFocus Corporation in the United States and other countries. DLP, the DLP logo, and the DLP medallion are trademarks of Texas Instruments. All trademarks are used with permission or are for identification purposes only and are the property of their respective companies. <sup>1</sup>Excludes power supply, fans, color wheel and light tunnel which are covered for two (2) years. <sup>2</sup>Labor is covered for two (2) years from date of proof of purchase. InFocus\_IN1100\_NEW\_DS\_4PG\_EN\_30MAY11. Part Number: MMINFOCUS-0204.