

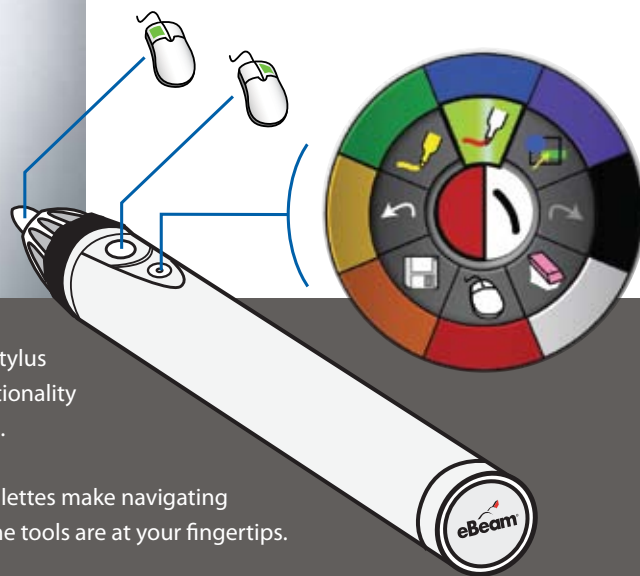


The most durable, innovative interactive whiteboard ever.

eBeam Integral combines a low-glare, porcelain-enameled steel surface and eBeam technology to provide educators with the most durable and easy-to-use interactive whiteboard on the market.

Use your digital projector and computer with eBeam Integral to create a powerful, interactive workspace that meets the needs of the multimedia classroom. The eBeam Interactive Stylus works like a mouse and allows you to control the computer, run PowerPoint® presentations, and annotate slides or documents directly from the board.

Use the eBeam Scrapbook to create presentations and develop powerful, graphic-rich content which can be saved in a variety of formats to suit your needs.



Multi-button Interactive Stylus provides mouse-like functionality for all of your applications.

Innovative circular tool palettes make navigating the software easy. All of the tools are at your fingertips.



Wireless communication and presentation technology for educators, presenters, consultants and administrators.

www.luidiaUK.com



A heavy-duty interactive board for the real world.

Three sizes to suit your unique needs.



Series 65 - 158.2cm x 121cm



Series 78 - 160cm x 127cm



Series 82 - 190cm x 120cm
(Being discontinued)



High quality, durable construction.

The eBeam Integral Board is available in a variety of sizes and features a low-glare, porcelain-enameled steel surface. Unlike the porous materials used in most interactive whiteboards, the porcelain cleans easily and is highly resistant to scratches, stains and corrosion. This along with its low glare surface means the surface always provides a crisp, clear background for projected images.

Series 65 features a surface produced by Steelcase

Series 78 features a surface by Alfher Porcewol

Series 82 features a surface by Alfher Porcewol



Intuitive, yet powerful software.

The eBeam Interact software easily integrates with your current workflow while offering powerful tools to increase productivity. The eBeam Interact floating tool palettes were designed specifically for large-screen interaction and provide the most popular tools in a revolutionary circular user interface. The software also enables educators, presenters and consultants to collaborate via the Internet, making remote lessons and meetings not only possible but much more engaging, efficient and cost-effective.

eBeam Integral Components

- Integral low-glare porcelain Surface
- Interactive Stylus
- CD with eBeam Interact software for PC
- AA battery
- 15' (5m) USB cable

Minimum System Requirements

- Windows® - compatible PC with Pentium™ II 400 MHz+ processor and Windows 2000, XP, Tablet PC
- 10 MB available hard drive space
- Available USB port

Warranty

- Three year on-site warranty on hardware and software
- BECTA Interactive Whiteboard Framework Specification Compliant



Contact your local eBeam reseller:

